

**I-72 INDUSTRIAL RAIL SITE
IN SPRINGFIELD, ILLINOIS
(TOTAL SITE ACREAGE = ± 377)**

PARCEL DIVISIONS ARE
CONCEPTUAL, FOR PLANNING
PURPOSES ONLY

CONCEPTUAL
FOR STUDY PURPOSES ONLY

**NORFOLK SOUTHERN MAINLINE
& RIGHT OF WAY**

SANGAMON COUNTY, ILLINOIS

INTERNATIONAL PKWY

EX. AT GRADE CROSSING TO
BE EVALUATED/UPGRADED

EX. OVERHEAD POWER LINE

TO DECATUR

± 0.5 MILES TO
OLD ROUTE 54

DH-422

19 ACRES SITE

15 ACRES SITE

60k SF

150k SF

117 ACRES SITE

315k SF

150k SF

39 ACRES SITE

25 ACRES SITE

635k SF

375k SF
EXPANSION

119 ACRES SITE

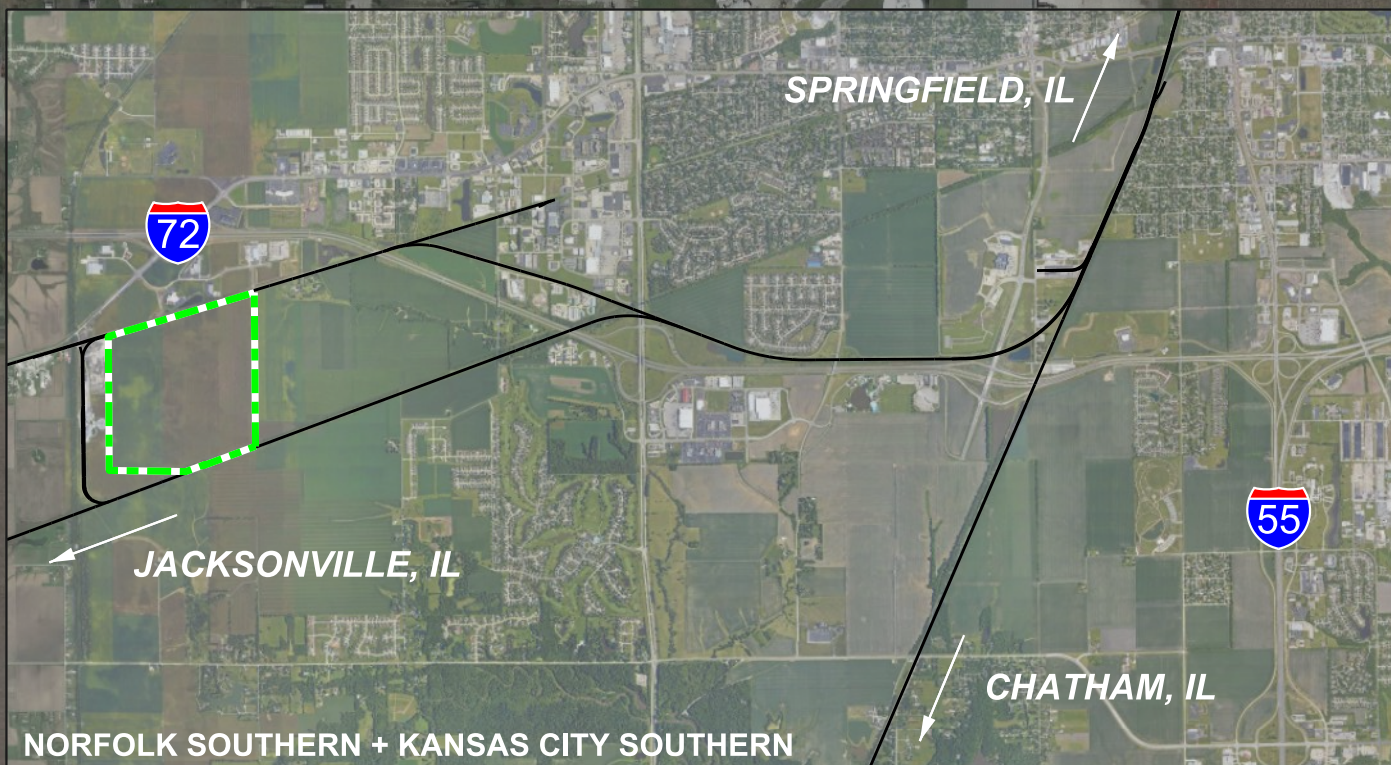
500k SF

400k SF

350k SF
EXPANSION

275k SF

**KANSAS CITY SOUTHERN MAINLINE
& RIGHT OF WAY**



LEGEND:

- PROPOSED TRACKS
- EXISTING TRACKS
- RR RIGHT OF WAY
- EXISTING POWER/TRANSMISSION LINE
- PROPOSED DETENTION POND
- PROPOSED STRUCTURES
- PROPOSED STRUCTURES (EXPANSION)
- PROPOSED ASPHALT
- PROPOSED ASPHALT (EXPANSION)
- PROPOSED SITE BOUNDARIES
- PROPOSED BUSINESS PARK RIGHT OF WAY
- PROPOSED PARCEL LINES
- USFWS WETLANDS

NOTE:
THIS DRAWING HAS NOT BEEN PREPARED FROM FIELD DATA,
BUT FROM GOOGLE EARTH IMAGES, CAPTURED 6/7/2016,
USFWS WETLAND MAPPER, USGS TNM COUNTOUR DATA,
AND SANGAMON COUNTY PARCEL VIEWER, LAST ACCESSED
8/2/2017. THIS PLAN IS INTENDED FOR STUDY PURPOSES ONLY.
FINAL DESIGN WILL REQUIRE APPROVALS FROM NORFOLK
SOUTHERN'S ENGINEERING AND OPERATING DEPARTMENTS.
ADDITIONAL INFRASTRUCTURE MAY BE REQUIRED ONCE
PROJECTED RAIL VOLUMES HAVE BEEN EVALUATED.



REV	BY	DATE	DESCRIPTION
NORFOLK SOUTHERN			
OFFICE OF THE AVP INDUSTRIAL DEVELOPMENT - ATLANTA, GA.			
LOCATION SPRINGFIELD, ILLINOIS			
TITLE POTENTIAL SITE DEVELOPMENT FOR I-72 INDUSTRIAL SITE			
OPERATING DIVISION	ILLINOIS	MILE POST	DH-422.0
V/S/MAP No.	7 ILLA/12 (10146)	DRAWING No.	
SITE No.	IL-SANGAMON-4		
DGN	ZRZ	DATE	AUGUST 22, 2018
			IDD-18-230